

TREE EQUITY

Promoting Fair Access to the Benefits of the Urban Forest

Trees and greenspaces are not equitably distributed in our cities.

TREE EQUITY refers to the fair distribution of trees and greenspaces in all neighbourhoods, regardless of race or income, so that everyone has access to the environmental, health, and economic benefits of a vibrant urban forest.

Racialized and low-income communities often have fewer trees than those that are whiter and more affluent.

What Caused Tree Inequity?

The disparity of trees exists because of historic and ongoing economic and race-based housing discrimination and other racist policies and practices that have marginalized communities of colour.

Tree Inequity Impact

High Canopy



- Better Air Quality
- Cooler Temperatures
- Lower Energy Bills
- Flood Prevention
- Social Benefits
- Physical & Mental Health Benefits

Low Canopy



28.8%
current

40.0%
2050

Tree Equity in Toronto

We aim to help the City of Toronto prioritize Tree Equity as they work towards their goal of 40% tree canopy cover across the city by 2050.

Focusing Efforts

The **Tree Equity Score Analyzer (TESA)** is a powerful, open-source tool that identifies areas of low-canopy cover and areas that require greater social and economic programs and support. This tool can be used to organize tree planting and stewardship projects.

Tree Equity Scores combine tree canopy data, population demographics and landscape features to create a single number.



TESA Allows You To:



Explore maps and learn about the urban landscape you live in



Plan tree planting projects and track progress towards tree equity



Evaluate data to prioritize areas with the greatest need for trees



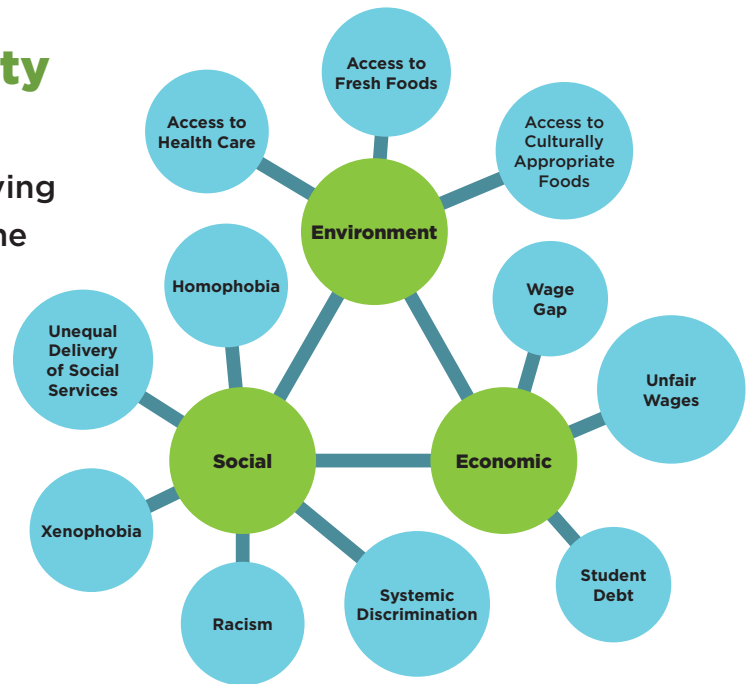
Communicate the need for and impact of tree planting projects

Intersectionality of Tree Equity

Tree inequity is just one of many interconnected issues preventing us from living in a fair and equitable society where everyone has the services needed to live healthy and happy lives.

More work is needed to address the systemic barriers preventing marginalized communities from achieving a healthy urban forest.

These Barriers Include



Steps You Can Take Today

Scan the QR code or visit yourleaf.org/NIA to learn more about these issues, how to advocate for them and find other related organizations.



Funded by

